

Test Procedure for the NCP3065 Boost Evaluation Board

ON Semiconductor



7/9/2007

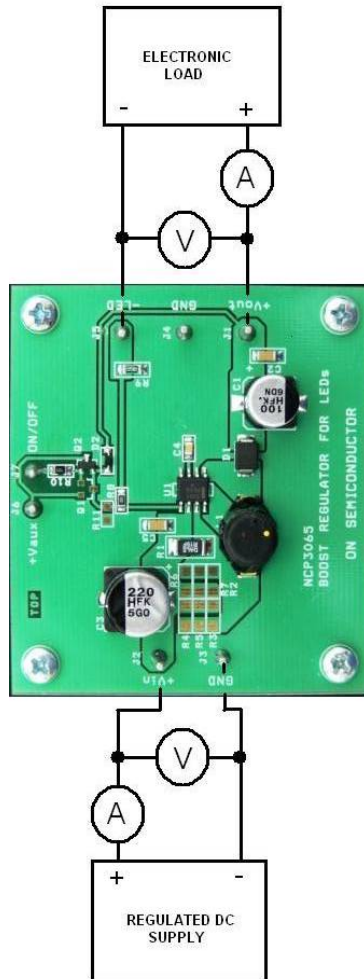


Figure 1: Test Setup

Required Equipment:

- dc Voltage supply, up to 35V, 3A
- Voltage meter
- Current meter
- Electronic load

Test Procedure:

1. Connect the test setup as shown in Figure 1.
2. Apply $V_{OUT} = 20\text{ V}$ load.
3. Apply an input voltage, $V_{CC} = 12\text{ V}$.
4. Check that I_{OUT} is 350mA
5. Power down the V_{CC} .
6. Power down the load.
7. End of test